

# INFORMATION FOR HIRE LEISURE CENTRE



Stantonbury Arts & Leisure  
Leisure ▪ Theatre ▪ Fitness

Welcome to Stantonbury Leisure Centre, this information is intended to give you some useful facts if you are interested in hiring the venue or parts of the venue.

For more detailed information and to discuss availability please contact the Events & Hire Team on 01908 324466 or email [customerservice@stantonbury.org.uk](mailto:customerservice@stantonbury.org.uk)

STANTONBURY LEISURE CENTRE  
Stantonbury Arts & Leisure  
Milton Keynes,  
Stantonbury,  
MK14 6BN

Email [customerservice@stantonbury.org.uk](mailto:customerservice@stantonbury.org.uk)  
[www.stantonburyleisure.co.uk](http://www.stantonburyleisure.co.uk)  
[www.stantonburytheatre.co.uk](http://www.stantonburytheatre.co.uk)

Stantonbury Leisure Centre can host business and social meetings, conferences, lectures, presentations, exhibitions, trade fairs, galas, training days and corporate parties. We can also host wedding receptions and parties from the small and simple to the large and lavish; so of you want to turn the Main Hall into a circus tent, Arabian Nights wedding or Christmas Grotto then we can help you deliver your event.

### Facilities available for Hire

- 256 Seat Auditorium with projection
- Meeting rooms
- Studios
- Main hall
- Social area
- Bar
- Gallery
- Swimming Pool
- Outdoor sports facilities

### Hire Charges

	Monday - Sunday Per Day	Monday - Sunday Per Hour
Main Hall	From £1000	
Social Area	From £250	
Dance Studio	From £150	£20
Studios	From £150	£20
Theatre	From £450	
Gallery	From £150	£20
Main Pool		From £60 per hour
Ashurst	From £350	
Meeting Room		£10 per hour

### Capacities

Main Hall	1175 persons (closely seated audience) Dinner Dance 700 persons
1 <sup>st</sup> Floor Dance/ Social Area	500 persons – if no tables, chairs or furniture are being used 450 persons – where existing tables and chairs are used 250 persons – where larger tables are utilised
Swimming Pool	200 persons (Galas only)
Theatre	Auditorium 256 (includes 4 wheelchair spaces)

## Deposit & Final Payment

On signing the contract to hire any part of the venue the hirer will pay a 50% deposit based on calculated hire costs. Final payment will be due a minimum of 4 weeks in advance of the hire period.

## Cancellation

In the event of the Hirer cancelling, the following will apply: -

Notice of Cancellation	Cancellation Fee
Cancelled within 8 weeks	Full hire fee to be paid less the deposit already remitted
Cancelled within 12 weeks	Pre-paid deposit automatically forfeited by the hirer PLUS 50% of <u>full</u> hire fee (less deposit)
Cancelled within 24 weeks	Pre-paid deposit automatically forfeited by the hirer PLUS 20% of <u>full</u> hire fee (less deposit)
Cancelled within 36 weeks or more	50 % of Pre-paid deposit forfeited by the hirer

## Facilities and Services

### Car Parks

There is FREE car parking adjacent to the venue.

There is FREE parking for Coaches.

Additional car parking nearby can be applied for.

### Services included in the Hire Charge

- Fully licensed bar areas and staff if required.
- Access to Loading Bay.
- Assistance with setting up & breakdown.
- Technical advice on staging, lighting, sound and special effects.
- Event included on venue website [www.stantonburyleisure.co.uk](http://www.stantonburyleisure.co.uk)

## Additional services that can be provided at additional cost

- Catering, service & waiting staff
- PA and sound systems
- Additional tables & chairs to existing stock
- Staging
- Ticketed events – we can sell your tickets for you

## Access

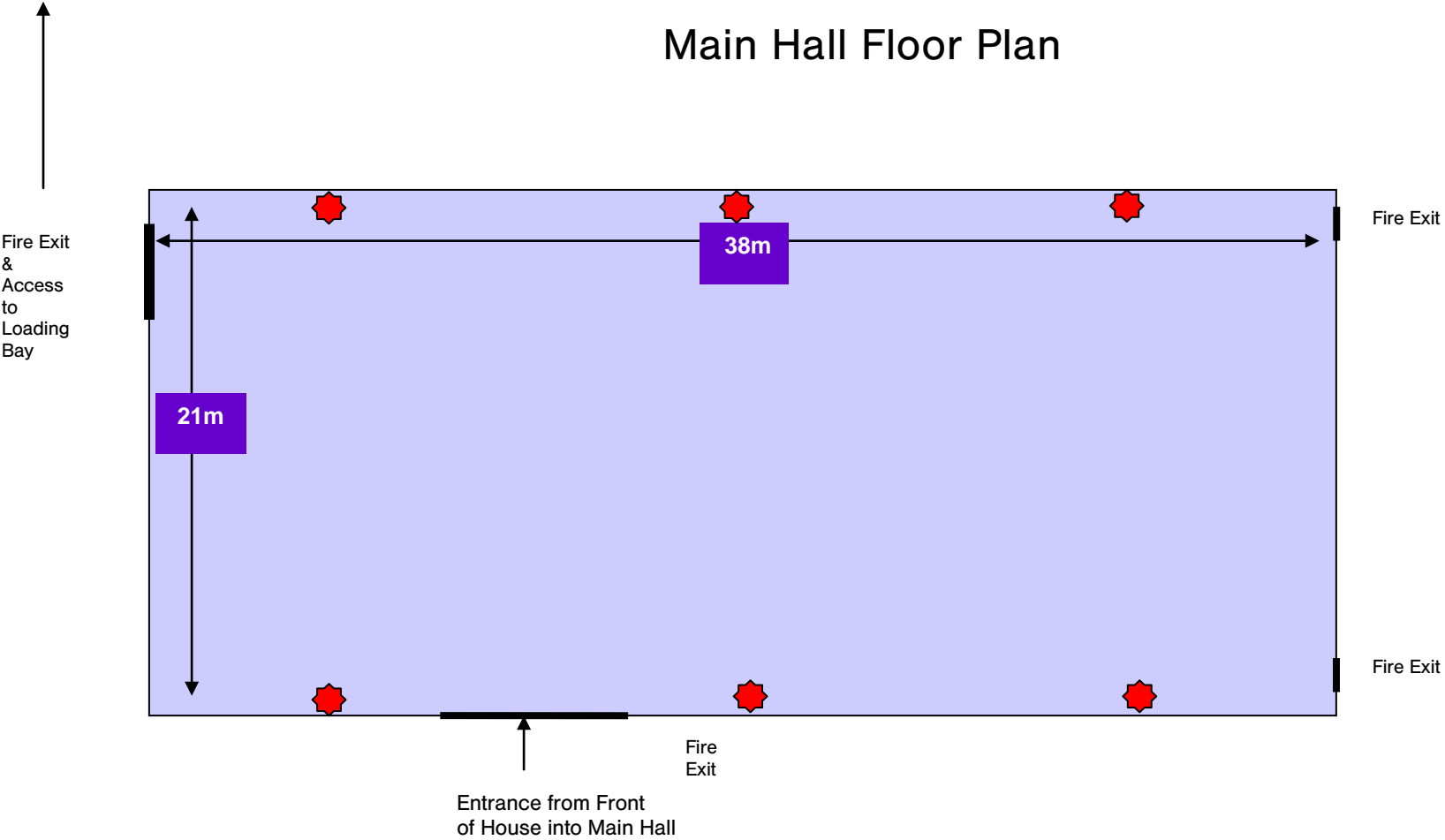
- Assistance dogs welcome
- Wheelchair access
- Accessible toilets
- Accessible parking
- Staff assistance
- Customer accessible lift provided
- Parent and pushchair access
- Accessible baby changing facilities

The Leisure Centre is accessible by ramp and automatic doors. A lift is available to facilitate access to the Social Area, Viewing Area and Cafe.

There are several specially marked parking bays for disabled patrons in the car park close to the centre and there is a facility to park a van or minibus or specially adapted vehicle nearby for unloading. This however is not a parking space and any vehicle must be removed once unloading has finished to give access for emergency vehicles. There is a larger car park where vehicles can subsequently be parked.



# Main Hall Floor Plan



Front of House & Leisure Centre Reception & Toilets

Not to Scale

 13 amp Electrical Sockets

Key



Fixed Social tables

# Social Area floor plan

